

Name: \_\_\_\_\_

### Remediation – LCM and GCF

After you have watched the video from the wiki, you should try the following problems and then use the key to check your work. If you are successful on this worksheet, take the re-evaluation quiz. Be sure to follow the directions there.

Directions: Please determine the LCM of the following sets of numbers.

1. 12 & 18



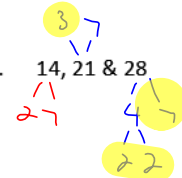
$$36$$

2. 20 & 25



$$100$$

3. 14, 21 & 28



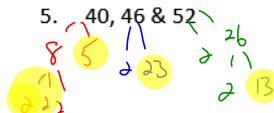
$$2^2 \cdot 3 \cdot 7 = 84$$

4. 270 & 630



$$2 \cdot 3^3 \cdot 5 \cdot 7 = 1890$$

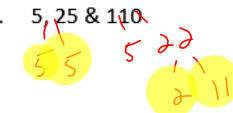
5. 40, 46 & 52



$$2^3 \cdot 5 \cdot 13 \cdot 23$$

$$11,960$$

6. 5, 25 & 110

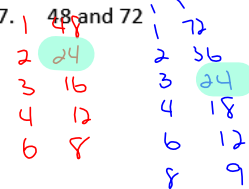


$$2 \cdot 5^2 \cdot 11$$

$$550$$

Directions: Please determine the GCF of the following sets of numbers.

7. 48 and 72



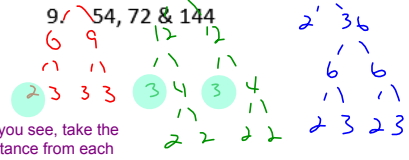
$$24$$

8. 18, 24 and 36



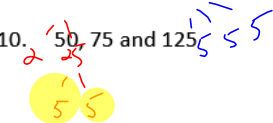
$$2 \cdot 3 = 6$$

9. 54, 72 & 144



$$2 \cdot 3 \cdot 3 = 18$$

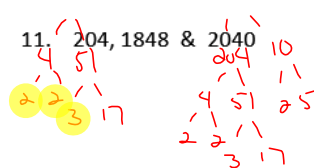
10. 50, 75 and 125



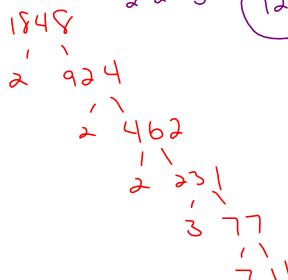
$$5^2 = 25$$



11. 204, 1848 & 2040



$$2 \cdot 2 \cdot 3 = 12$$



12. 160, 224 & 352



$$2^5 = 32$$

